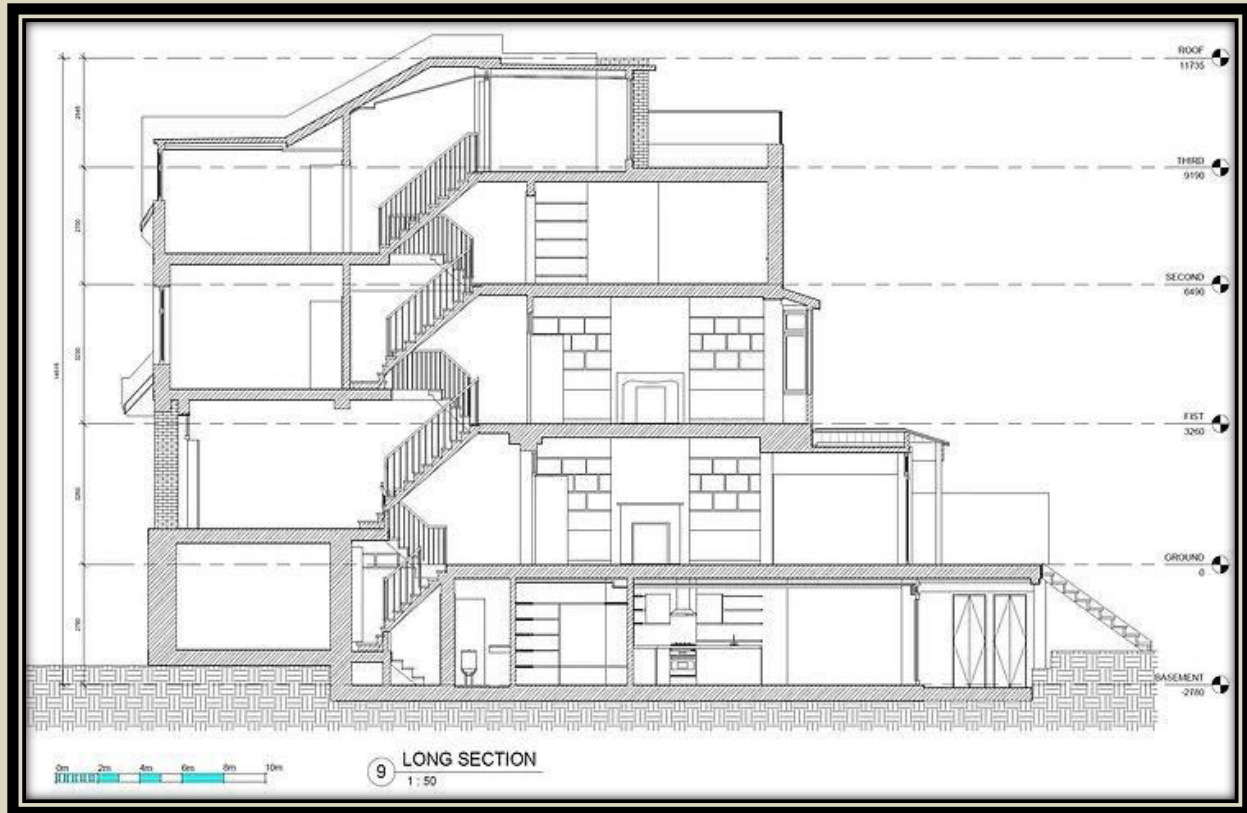




Things to Expect From Measured Surveys in London



Proper planning is important before making any changes to the property. Architects have to work overtime to make the planning accurately and in such cases, proper measurements are required. Needless to mention, that measured surveys in London can be tricky due to limited access or travel, it is sometimes impossible to get all the measurements that are needed.



Laser scanned Measured building surveys involve both the internal or external mapping of buildings and structures, describing the architectural features and structural features of a building. They are frequently regarded as a crucial stage in the design and planning process of a variety of projects, including planning applications, discussions on listed buildings, home extensions and alterations, and refurbishment projects.

Measured building surveys done by scanning are extremely helpful for a variety of projects, especially in terms of their accuracy, efficiency with regard to both time and money, and capacity to offer a strong basis for a project. If you are an architect, let's discover how a measured building survey could help your project.

99% Accuracy

Modern technology, such as laser scanning, BIM, and UAVs, are used in measured building surveys to precisely capture a building's structure and constituent parts. The developed and established representation can be provided in both 2D and 3D after professional analysis and processing of the data. A quality-controlled, precise survey is essential for guiding your design or renovation work.

Building a strong project foundation

It is crucial that the first steps of your project are carried out accurately because inaccurate information can result in a wide range of issues later on, such as unanticipated expenses, delays, and fittings.

Measured building surveys have a significant impact on the project as a whole. A more realistic and reflective design of the property that takes into account existing features can be created by your architect using the very accurate and precise information provided in the survey.

This information can also be used as a reference point or to inform additional future activities, such as building modifications, rebuilds, and renovations, during the course of the project.

Require less time and cost-effective

When working on a construction project, it's crucial to keep costs under control whenever possible. Measured construction surveys reduce the possibility of costly and time-consuming errors occurring at any step in the process, which improves the efficiency of your project. Your architect's plans will be accurate and accurately drawn floor areas, room widths and room heights thanks to a laser measured building survey. This makes it possible to precisely plan building operations using very precise measurements.

In contrast, if a project is designed using incorrect dimensions, your contractor is more likely to run into issues during construction, leading to delays in the building process, an increase in labor costs, and possibly lost material costs.

According to experts, getting [measured surveys in London](#) is all about to avoid any unforeseen issues later in the project and to keep costs down and achieve strict timelines.

Measured surveys are the most important and initial aspect for architects to prepare their plan. Once this initial stage gets perfectly done, the next steps also go smoothly as per plan.

CONTACT US

37 Stradella road

London

SE249HN, United Kingdom

Ph no: (02032876610 Ext 1)

Email: survey@spacephoto.co.uk

Web: <https://www.spacesurvey.co.uk/>



THANK YOU